



Cracking the Facility Problem?

Theories of Change for Adaptation at Scale



PRACTITIONERS FORUM
**ADAPTIVE PROGRAMMING AND
MONITORING, EVALUATION & LEARNING**

JUNE 5-6, 2018
The Makati Shangri-La Hotel | Philippines



COALITIONS for CHANGE

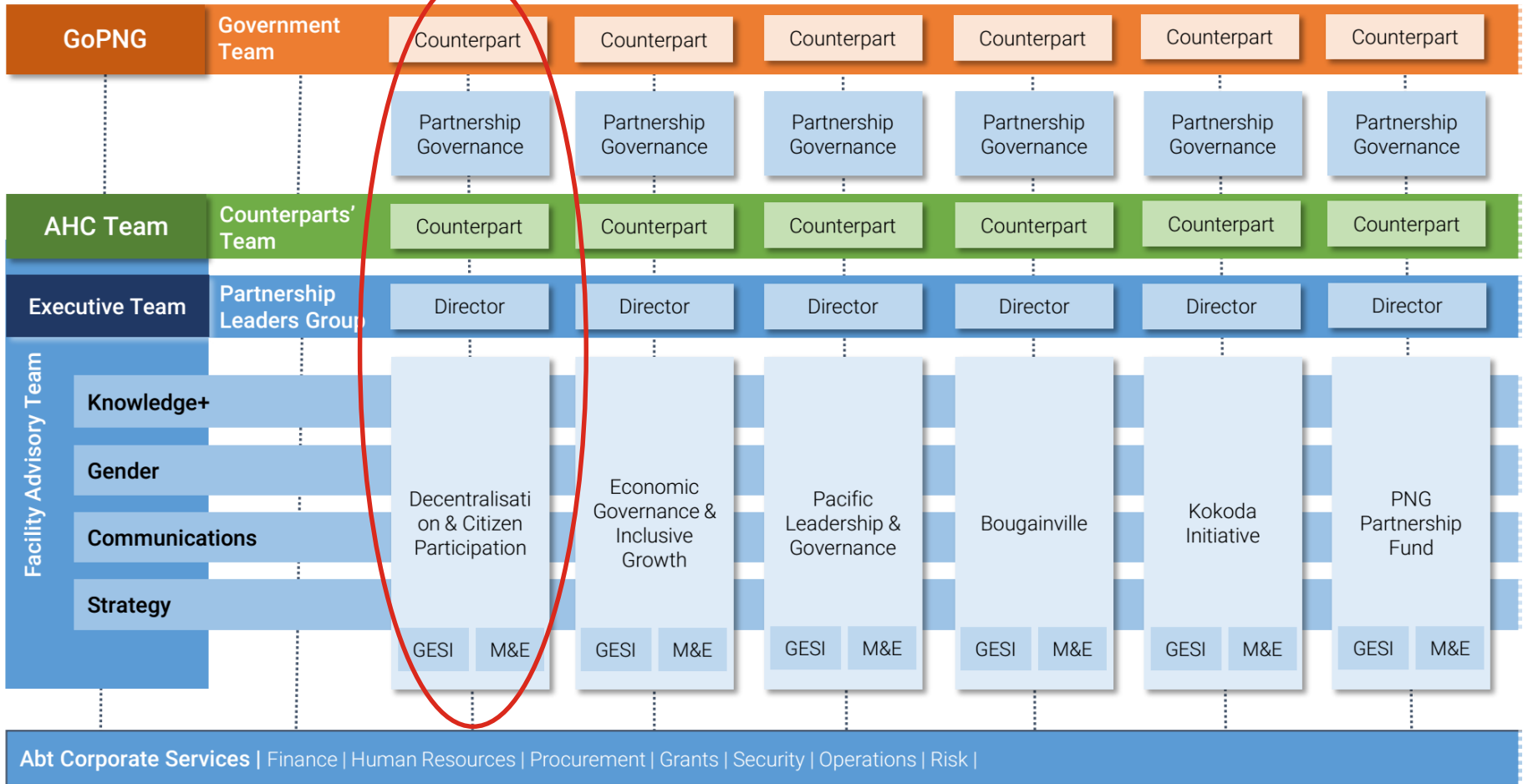


Australian Government

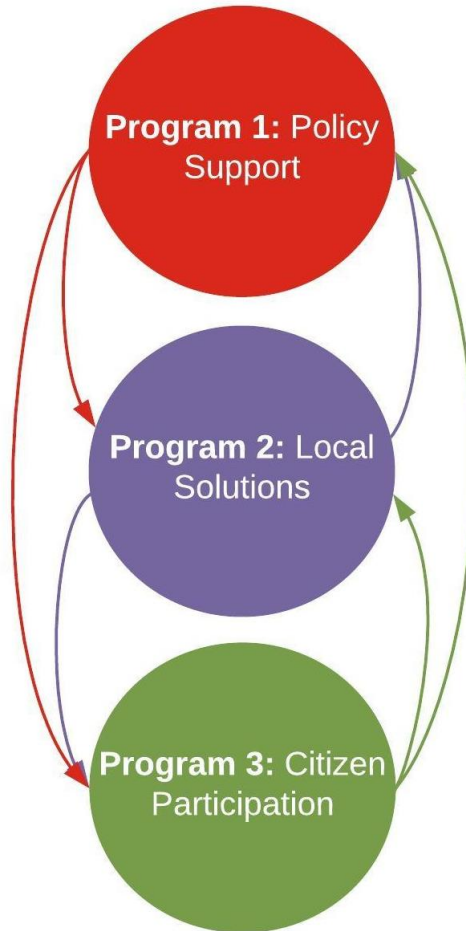
#PNGAusPartnership

Supported by the Australian Government as part of the
PNG-Australia Governance Partnership
implemented by Abt Associates

PNG-Australia Governance Partnership



A first attempt...



Partnership Impact:

PNG's national, sub-national and inter-governmental institutions are better able to provide quality services and development outcomes that respond to the needs of citizens.

Policy Support Outcome:

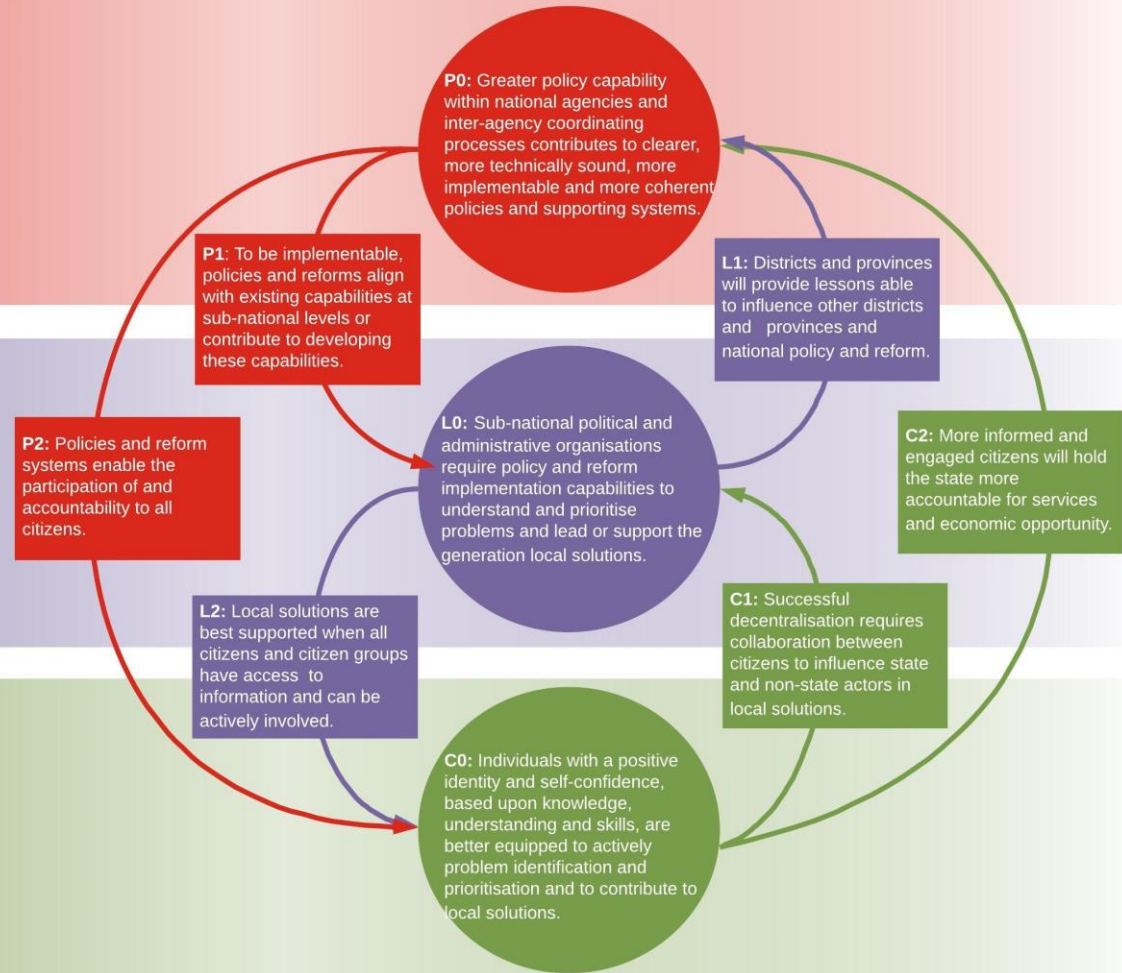
Polices and systems will be in place and implemented that support service delivery and economic development at national and sub-national levels

Local Solutions Outcome:

Districts, localities, provinces and regions will be better equipped to respond to citizens and provide, or facilitate, better service delivery and economic opportunity

Citizen Participation Outcome:

Citizens will be better informed and will be able to use their voice to both influence and participate in effecting improvements in their access to services and economic opportunity



Outcome: Policies and systems will be in place and implemented that support service delivery and economic development at national and sub-national levels

Theory of Change Elements [Assumptions]	Evaluative Questions	Progress Markers	Indicators	Means of Verification	Timing
<p>To be implementable, policies and systems align with existing capabilities at sub-national levels or contribute to developing these capabilities.</p> <p>[Policies and systems at the national level can be implemented at sub-national levels.]</p>	<p>Is there adequate capacity development for local officials on national policies?</p> <p>Is there adequate human and financial resource provision to support national policies?</p> <p>Do local officials feel national policies are compatible, coherent, and converging?</p>	<p>Expect: National agencies adequately disseminate national policies.</p> <p>Like: National agencies provide human and financial support for the implementation of national policies.</p> <p>Love: An increasingly cohesive whole-of-government approach to decentralisation policy implementation is accepted, understood, and implemented.</p>	<p>Number of District Development Authority (DDA) CEOs, Pas, and DAs that understand their role in national policies.</p>	<p>District Status Update</p> <p>PCMC reports</p> <p>DPLGA S119</p> <p>PLLSMA reports</p> <p>Local capability Assessment</p>	<p>Annual</p> <p>Ongoing</p>

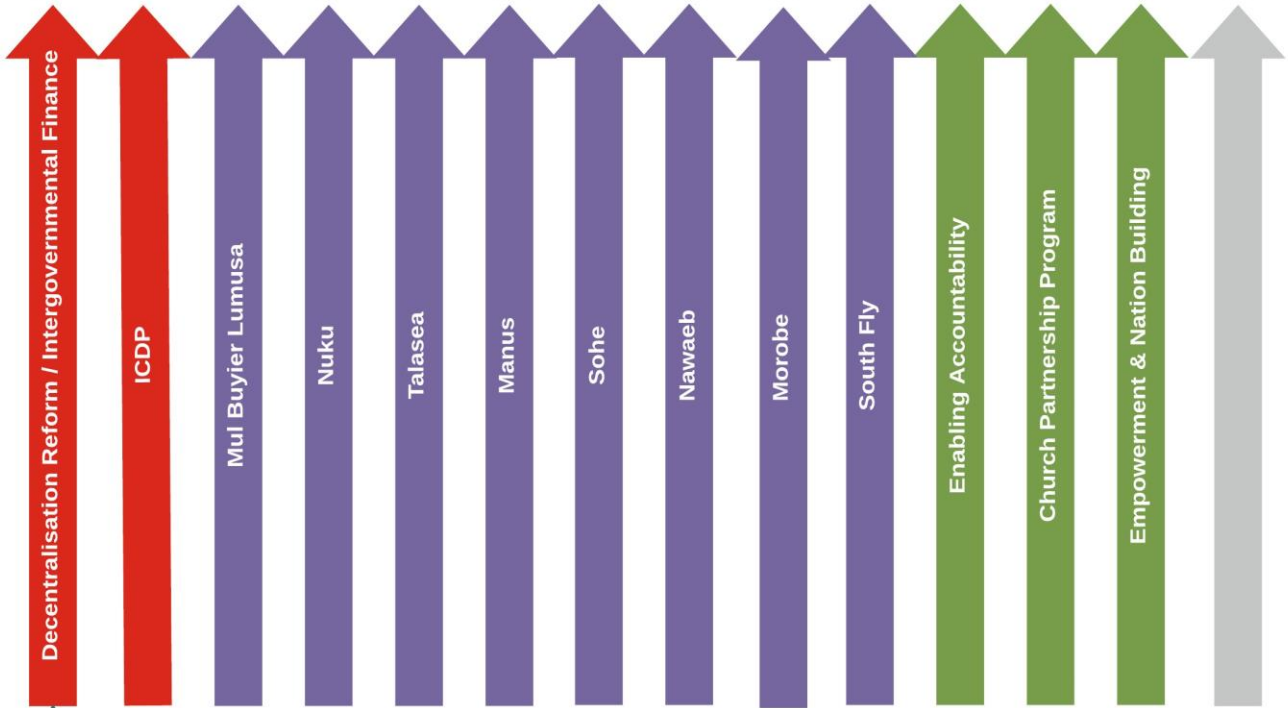
P
1

IMPACT

Quality Service and Development Outcomes



OUTCOMES



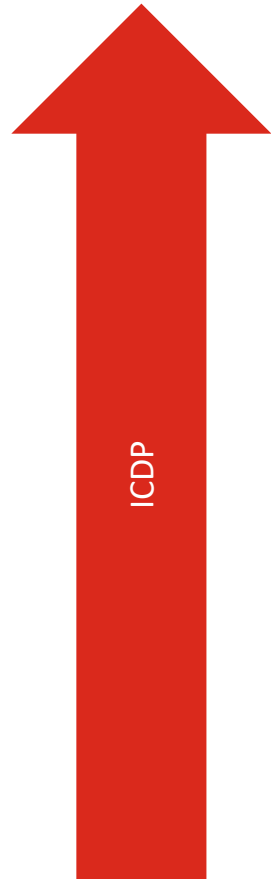
Issue-based projects



Projects

- What are we working on? • Clear project outcomes • Integrate program 1,2,3 GESI, Comms, C4D, KAL and MEL
- Managed through a flexible team of teams (DCPP+) • Ultimate accountability sits with a lead program area

A policy example



Issue area	GoPNG state-citizen engagement
Clear project outcomes	<p>Families and communities in PNG are empowered and able to access services for their development through government policy and systems that are implemented</p> <p>Gender and Inclusion</p>
Integrate program 1, 2, 3, GESI, Comms, C4D, KAL and MEL	<p>P1 – STA – ICDP Policy Review, activity support (ICDP implementation)</p> <p>P2 – Activity Support (ICDP implementation through SNA workplans and local solutions)</p> <p>P3 – Media, Social Accountability (State-citizen engagement)</p> <p>C4D – ICDP & disability communications, C4D forum</p> <p>GESI – ICDP/disability training initiatives</p> <p>MEL – Case study / baseline</p> <p>KAL – Disability database</p> <p>PSLR – DfCDR training, WiL</p>
Team of teams (DCPP+)	Program 1, Program 2, Program 3, C4D, GESI, PSLR
Accountability	Program 1 – Senior Program Manager

Some MEL things we puzzle over...



- Policy indicators
- Baselines vs. outcome mapping and harvesting
- Language barriers
- Citizens